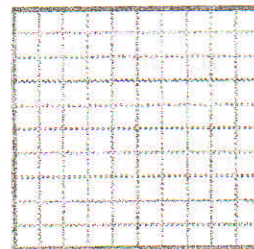
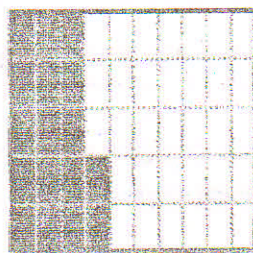
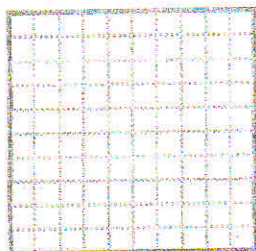


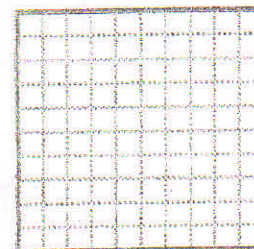
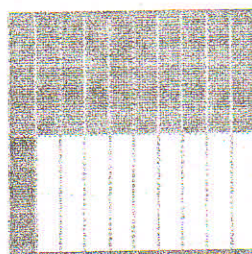
— = — % of each is shaded.



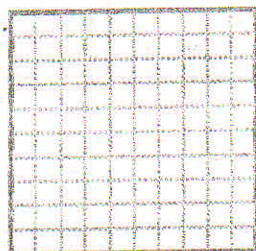
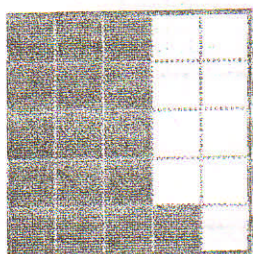
— = — % of each is shaded.



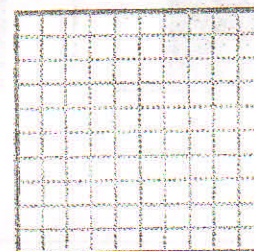
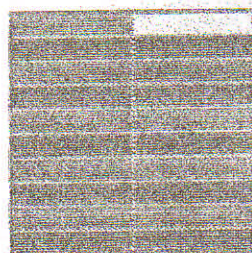
— = — % of each is shaded.



— = — % of each is shaded.



— = — % of each is shaded.



— = — % of each is shaded.

Let's look at the last four pairs of fractions. You can multiply the numerator and denominator of the first fraction by the same number to make the second fraction.

Multiply by  $\frac{2}{2}$ :

$$\frac{3 \times 2}{50 \times 2} = \frac{6}{100}$$

Multiply by  $\frac{10}{10}$ :

$$\frac{6 \times 10}{10 \times 10} = \frac{60}{100}$$

Multiply by  $\frac{4}{4}$ :

$$\frac{16 \times 4}{25 \times 4} = \frac{64}{100}$$

Multiply by  $\frac{5}{5}$ :

$$\frac{19 \times 5}{20 \times 5} = \frac{95}{100}$$

A fraction with the same number (except 0) in the numerator and denominator equals one. The second fraction in each pair above equals the first because you are simply multiplying by one.